



**KEYED NOTES**

- PHOTOVOLTAIC MODULE 230 WATT VOC, SOLON BLUE #230/01.
- PV MODULE INTERCONNECT CABLE, 90°C MET-RATED CONDUCTORS, TYPE "TC" MULTI CONDUCTOR CABLE WITH THHN-2, XHHW-2, OR RHW-2 OR EQUIVALENT.
- UTILITY INTER-TIE CO-GENERATION INVERTER, RATED 600 VDC INPUT, 240VAC/700W OUTPUT, INTEGRATED DC SWITCH DISCONNECTOR WITH 15A FUSES, SMA-AMERICA #SUNNY BOY 7000-US.
- UTILITY ACCESSIBLE NON-FUSIBLE DISCONNECT SWITCH, 200 AMP, 2-POLE, 240 VOLT, NEMA-3R ENCLOSURE. DISCONNECT SHALL BE LOCATED NEAR PV OUTPUT METER.
- PROVIDE AND INSTALL A 200 AMP, 120/240VOLT, SINGLE PHASE METER ENCLOSURE FOR USE WITH PV OUTPUT METER, PANEL DRAWINGS MS-2-20. COORDINATION REQUIREMENTS AND INSTALLATION WITH PNL.
- PROVIDE AND INSTALL A PULLBOX, AS REQUIRED, FOR TRANSFORMING FROM PV MODULE INTERCONNECT CABLES TO CONDUIT AND CONDUCTORS. PULLBOX TO SHALL BE NEMA-3R AND SIZED PER N.E.C.
- 2#10 IN 3/4" CONDUIT.
- 3#1/0 AND 1#8 GROUND IN 1-1/2" CONDUIT.
- PROVIDE AND INSTALL A NEW 150A/2P CIRCUIT BREAKER IN AVAILABLE SPACE.
- AC DISCONNECT, (0)15A-2P CIRCUIT BREAKER, 800 VAC, PROVIDE AND INSTALL UL LISTED, NEMA-3R CIRCUIT BREAKER ENCLOSURE.
- 1#8 GROUND FOR DC CIRCUIT. CONNECT TO EXISTING GROUNDING SYSTEM PER NEC REQUIREMENTS. (TYPICAL)
- NON-FUSIBLE DISCONNECT SWITCH, 30 AMP, 1-POLE, 600 VOLT, NEMA-3R ENCLOSURE. DISCONNECT SHALL BE LOCATED IN SITE OF PV ARRAY. (TYPICAL OF 12 ARRAYS)
- 3#10 AND 1#10 GROUND IN A 3/4" CONDUIT.

**GENERAL NOTES**

- PV SYSTEM SHALL MEET 2009 N.E.C. ARTICLE 690 REQUIREMENTS.

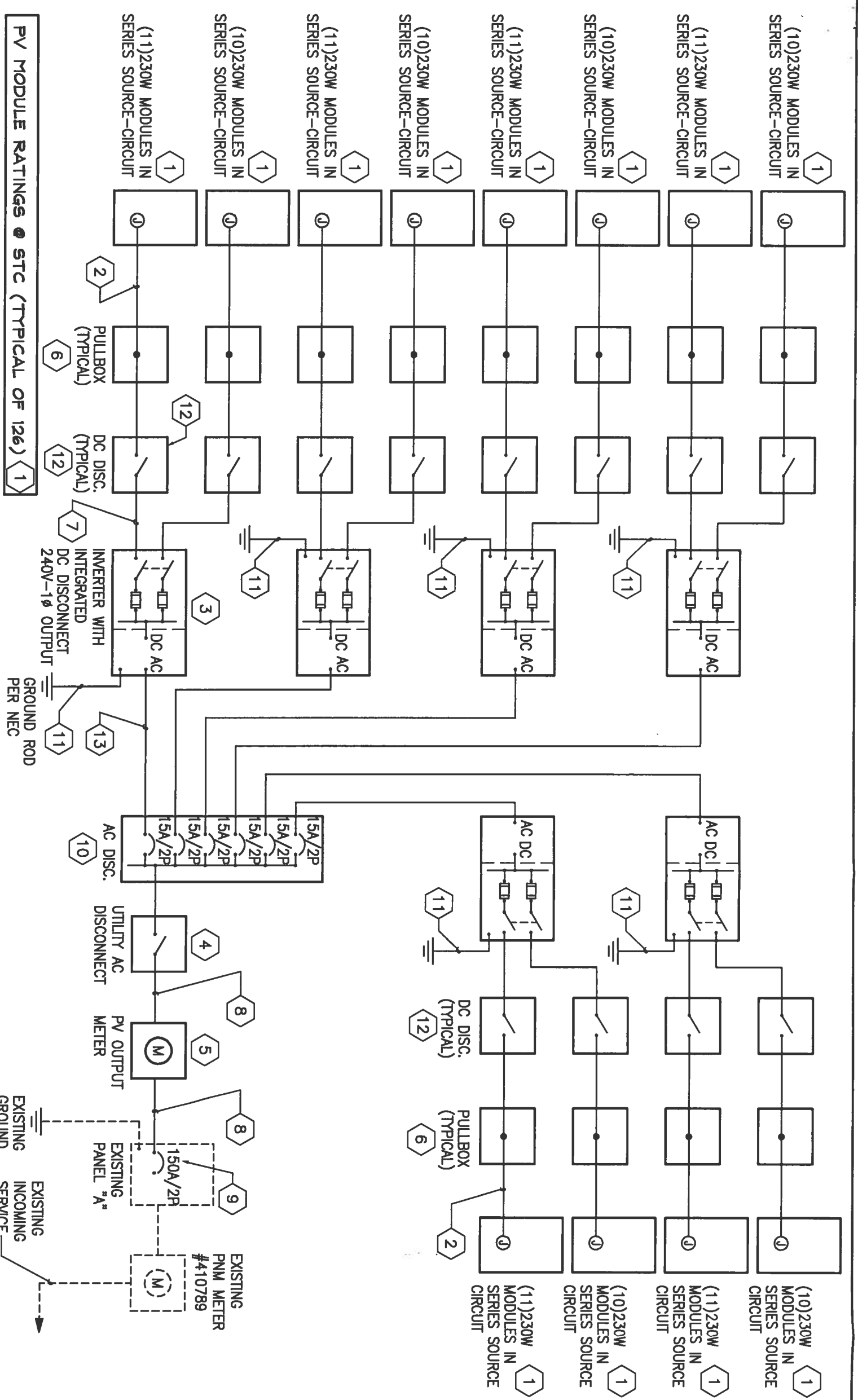
**THE RESPONSE GROUP, INC.**

An Electrical/Mechanical Engineering Corporation  
 11930 Menaul NE, Suite 214  
 Albuquerque, New Mexico 87112  
 Phone: (505) 323-7529 Fax: (505) 323-7594  
 Email: response@response.net

VILLAGE OF CORRALES  
 VILLAGE HALL PV SYSTEM - F  
 4324 CORRALES RD  
 CORRALES, NM 87048

SHEET TITLE  
**PV ONE-LINE DIAGRAM**

PROJECT:	10206
SCALE:	NONE
DMN BY:	TFR
CHK BY:	DDR
DATE:	10-21-10

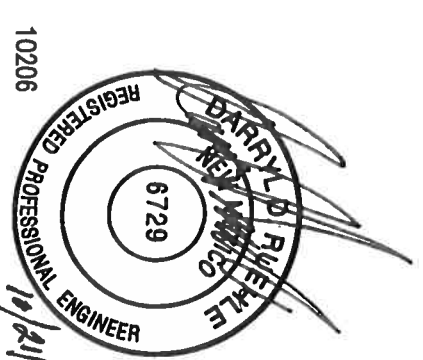


**PV MODULE RATINGS @ STC (TYPICAL OF 126) (1)**

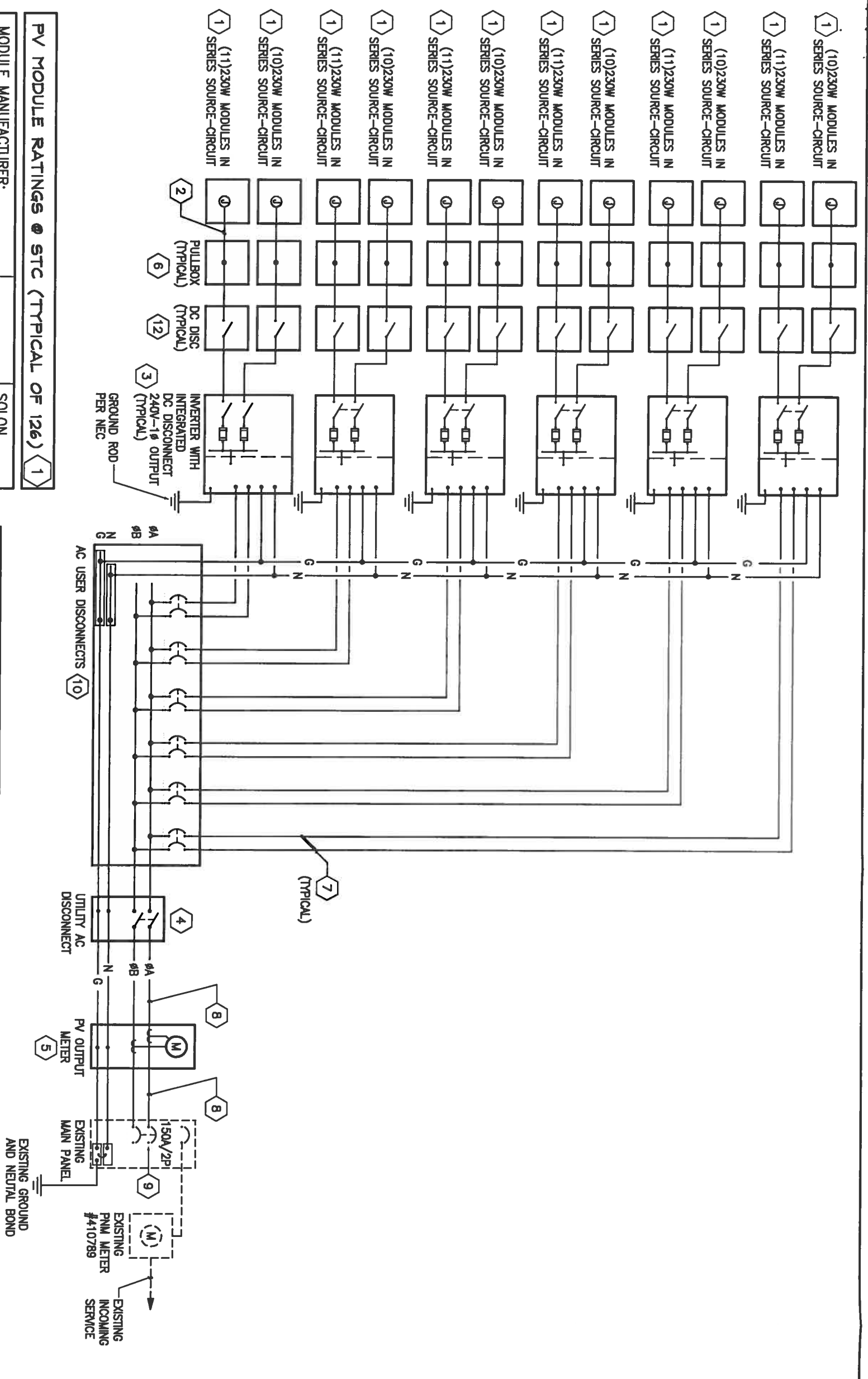
MODULE MANUFACTURER:	SOLON
MODULE MODEL#:	BLUE 230/01
MAX POWER CURRENT:	Lmp (A) 7.88
MAX POWER POINT VOLTAGE:	Vmp (V) 29.2
OPEN-CIRCUIT VOLTAGE:	Voc (V) 36.22
SHORT-CIRCUIT VOLTAGE:	Isc (A) 8.38
MAX SERIES FUSE:	OCPD (A) 15
MAXIMUM POWER:	Pmax (W) 230
MAX SYSTEM VOLTAGE:	typ 600Vdc (V) 600

**INVERTER RATINGS (TYP OF 6) (3)**

INVERTER MAKE:	SMA-AMERICA
INVERTER MODEL#:	SB 7000-US
MAX DC VOLT RATING:	600V
MAX POWER @ 40°C:	8750W
NOMINAL AC VOLTAGE:	211-264V (240V)
MAX AC CURRENT:	29A
MAX OCPD RATING:	4 X 20A STRINGS



10206



PV MODULE RATINGS @ STC (TYPICAL OF 126) (1)	
MODULE MANUFACTURER:	SOLON
MODULE MODEL#:	BLUE 230/01
MAX POWER CURRENT:	Lmp (A) 7.88
MAX POWER POINT VOLTAGE:	Vmp (V) 29.2
OPEN-CIRCUIT VOLTAGE:	Voc (V) 36.22
SHORT-CIRCUIT VOLTAGE:	Isc (A) 8.38
MAX SERIES FUSE:	OCPD (A) 15
MAXIMUM POWER:	Pmax (W) 230
MAX SYSTEM VOLTAGE:	typ 600Vdc (V) 600

INVERTER RATINGS (TYP OF 6) (3)	
INVERTER MAKE:	SMA-AMERICA
INVERTER MODEL#:	SB 7000-US
MAX DC VOLT RATING:	600V
MAX POWER @ 40°C:	8750W
NOMINAL AC VOLTAGE:	211-264V (240V)
MAX AC CURRENT:	29A
MAX OCPD RATING:	4 X 20A STRINGS

**KEYED NOTES**

- PHOTOVOLTAIC MODULE 230 WATT VOC, SOLON BLUE #230/01.
- PV MODULE INTERCONNECT CABLE 90°C WET-RATED CONDUCTORS, TYPE "TC" MULTI CONDUCTOR CABLE WITH THHN-2, XHHW-2, OR RHW-2 OR EQUIVALENT.
- UTILITY INTER-TIE CO-GENERATION INVERTER, RATED 600 VDC INPUT, 240VAC/7.0kW OUTPUT, INTEGRATED DC SWITCH DISCONNECTOR WITH 15A FUSES, SMA-AMERICA #SUNNY BOX 7000-US.
- UTILITY ACCESSIBLE NON-FUSIBLE DISCONNECT SWITCH, 200 AMP, 2-POLE, 240 VOLT, NEMA-SR ENCLOSURE. DISCONNECT SHALL BE LOCATED NEAR PV OUTPUT METER.
- PROVIDE AND INSTALL A 200 AMP, 120/240VOLT, SINGLE PHASE METER ENCLOSURE FOR USE WITH PV OUTPUT METER. PNM DRAWING MS-2-20. COORDINATION REQUIREMENTS AND INSTALLATION WITH PNM.
- PROVIDE AND INSTALL A PULLBOX, AS REQUIRED, FOR TRANSITIONING FROM PV MODULE INTERCONNECT CABLES TO CONDUIT AND CONDUCTORS. PULLBOX TO SHALL BE NEMA-SR AND SIZED PER N.E.C.
- 2#10 IN 3/4" CONDUIT.
- 3#1/0 AND 1#6 GROUND IN 1-1/2" CONDUIT.
- PROVIDE AND INSTALL A NEW 150A/2P CIRCUIT BREAKER IN AVAILABLE SPACE.
- AC DISCONNECT, (9)15A-2P CIRCUIT BREAKER, 600 VAC, PROVIDE AND INSTALL UL LISTED, NEMA-SR CIRCUIT BREAKER ENCLOSURE.
- 1#6 GROUND FOR DC CIRCUIT. CONNECT TO EXISTING GROUNDING SYSTEM PER NEC REQUIREMENTS. (TYPICAL)
- NON-FUSIBLE DISCONNECT SWITCH, 30 AMP, 1-POLE, 600 VOLT, NEMA-SR ENCLOSURE. DISCONNECT SHALL BE LOCATED IN SITE OF PV ARRAY. (TYPICAL OF 12 ARRAYS)
- 3#10 AND 1#10 GROUND IN A 3/4" CONDUIT

**GENERAL NOTES**

- PV SYSTEM SHALL MEET 2009 N.E.C. ARTICLE 690 REQUIREMENTS.

**THE RESPONSE GROUP, INC.**

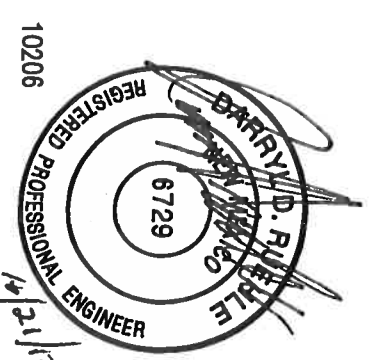
An Electrical/Mechanical Engineering Corporation  
 11930 Memorial N.E. Suite 214  
 Albuquerque, New Mexico 87112  
 Phone:(505) 323-7829 Fax:(505) 323-7394  
 Email: response@response.net

VILLAGE OF CORRALES  
 VILLAGE HALL PV SYSTEM - F  
 4324 CORRALES RD  
 CORRALES, NM 87048

SHEET TITLE  
**PV THREE-LINE DIAGRAM**

SHEET NUMBER 2 OF 9

PROJECT: 10206  
 SCALE: NONE  
 DWN BY: TFR  
 CHK BY: DDR  
 DATE: 10-21-10




**LARKIN GROUP, INC.**  
 8500 MENAUL NE, SUITE A-440  
 ALBUQUERQUE, NEW MEXICO 87112  
 (505) 275-7500, FAX (505) 275-0748  
 ENGINEER'S FILE No. 2005-0009

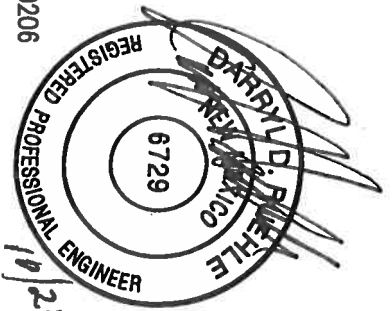
**THE RESPONSE GROUP, INC.**  
 An Electrical/Mechanical Engineering Corporation  
 11930 Menaul N.E. Suite 214  
 Albuquerque, New Mexico 87112  
 Phone: (505) 323-7529 Fax: (505) 323-7594  
 E-mail: responsegrp@qwest.net

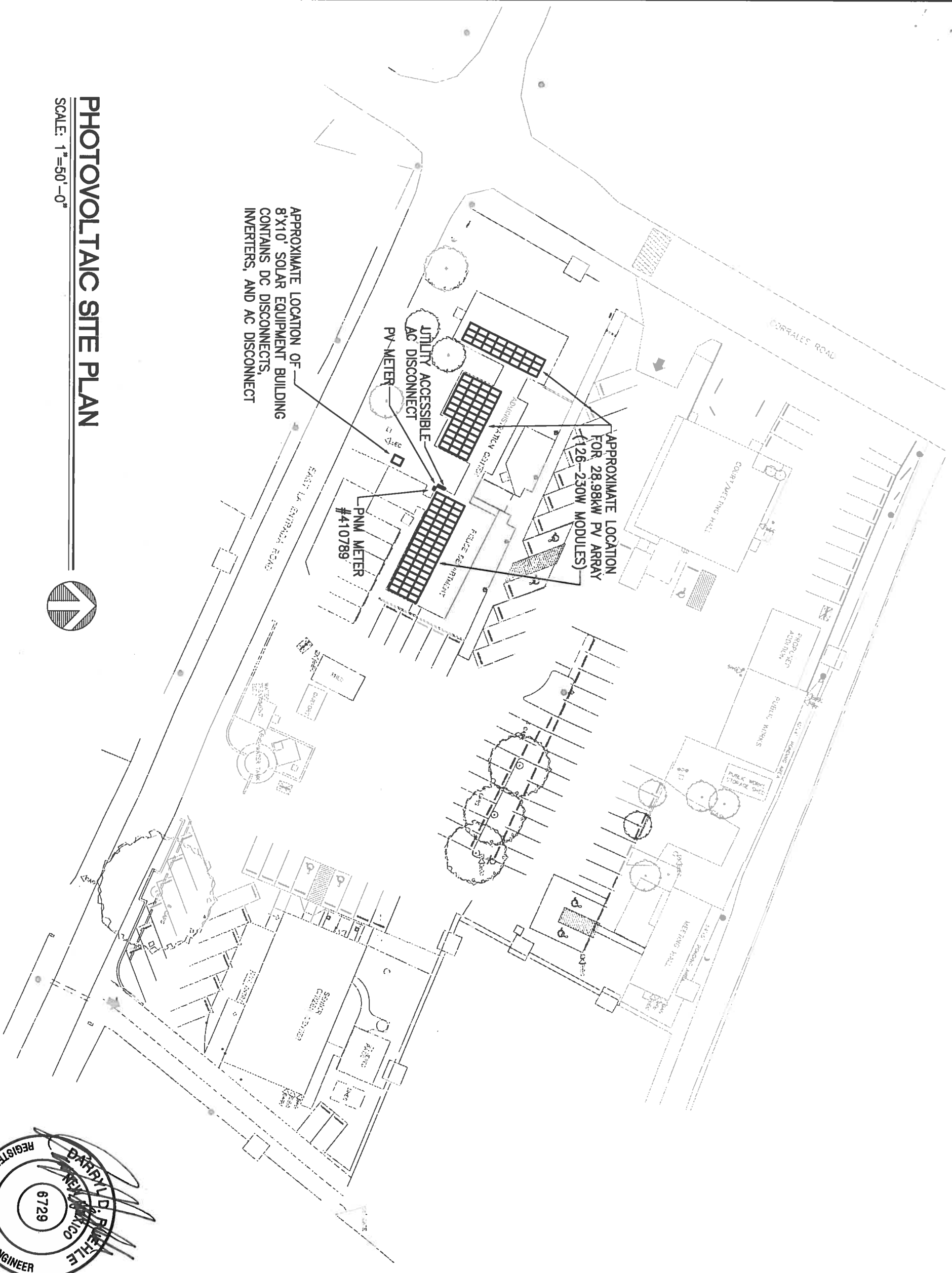
**VILLAGE OF CORRALES**  
**VILLAGE HALL PV SYSTEM - F**  
**4324 CORRALES RD**  
**CORRALES, NM 87048**

SHEET TITLE  
**PV SITE PLAN**

SHEET NUMBER 3 OF 3

PROJECT:	10206
SCALE:	1"=50'-0"
DMN BY:	TFR
CHK BY:	DDR
DATE:	10-21-10

10206  
 10/21/10  




APPROXIMATE LOCATION OF  
 8'X10' SOLAR EQUIPMENT BUILDING  
 CONTAINS DC DISCONNECTS,  
 INVERTERS, AND AC DISCONNECT

APPROXIMATE LOCATION  
 FOR 28,98KW PV ARRAY  
 (126-230W MODULES)

PNM METER  
 #410789

**PHOTOVOLTAIC SITE PLAN**

SCALE: 1"=50'-0"

