

KEYED NOTES

1. PHOTOVOLTAIC MODULE 230 WATT VDC, SOLON BLUE #230/01.
2. PV MODULE INTERCONNECT CABLE, 90°C WET-RAIATED CONDUCTORS, TYPE "TC" MULTI CONDUCTOR CABLE WITH THHN-2, XHHW-2, OR RHW-2 OR EQUIVALENT.
3. UTILITY INTER-TIE CO-GENERATION (NO BATTERY) INVERTER, RATED 600 VDC INPUT, 240VAC/600W OUTPUT, INTEGRATED DC SWITCH DISCONNECTOR WITH 15A FUSES, SMA-AMERICA #SUNNY BOY 8000-US. OUTPUT VOLTAGE SHALL BE 240 VOLTS.
4. UTILITY ACCESSIBLE NON-FUSIBLE DISCONNECT SWITCH, 30 AMP, 2-POLE 240 VOLT, NEMA-3R ENCLOSURE. DISCONNECT SHALL BE LOCATED NEAR PV OUTPUT METER.
5. PROVIDE AND INSTALL A 100 AMP, 120/240VOLT, SINGLE PHASE METER ENCLOSURE FOR USE WITH PV OUTPUT METER, PNM BRANING US-2-20. COORDINATION REQUIREMENTS AND INSTALLATION WITH PNM.
6. PROVIDE AND INSTALL A PULLBOX, AS REQUIRED, FOR TRANSDUCING FROM PV MODULE INTERCONNECT CABLES TO CONDUIT AND CONDUCTORS. PULLBOX TO SHALL BE NEMA-3R AND SIZED PER N.E.C. (TYPICAL).
7. 2/10 IN 3/4" CONDUIT.
8. 3/8 AND 1/8 GROUND IN 1-1/4" CONDUIT.
9. PROVIDE AND INSTALL A NEW 100A/2P CIRCUIT BREAKER IN AVAILABLE SPACE.
10. AC DISCONNECT, (3)35A-2P CIRCUIT BREAKERS, 600 VAC, PROVIDE AND INSTALL UL LISTED, NEMA-3R CIRCUIT BREAKER ENCLOSURE.
11. 1/8 GROUND FOR DC CIRCUIT.
12. NON-FUSIBLE DISCONNECT SWITCH, 30 AMP, 1-POLE, 600 VOLT, NEMA-3R ENCLOSURE. DISCONNECT SHALL BE LOCATED IN SITE OF PV ARRAY.
13. 3/8 AND 1/10 GROUND IN 3/4" CONDUIT.

GENERAL NOTES

1. PV SYSTEM SHALL MEET 2009 N.E.C. ARTICLE 690 REQUIREMENTS.

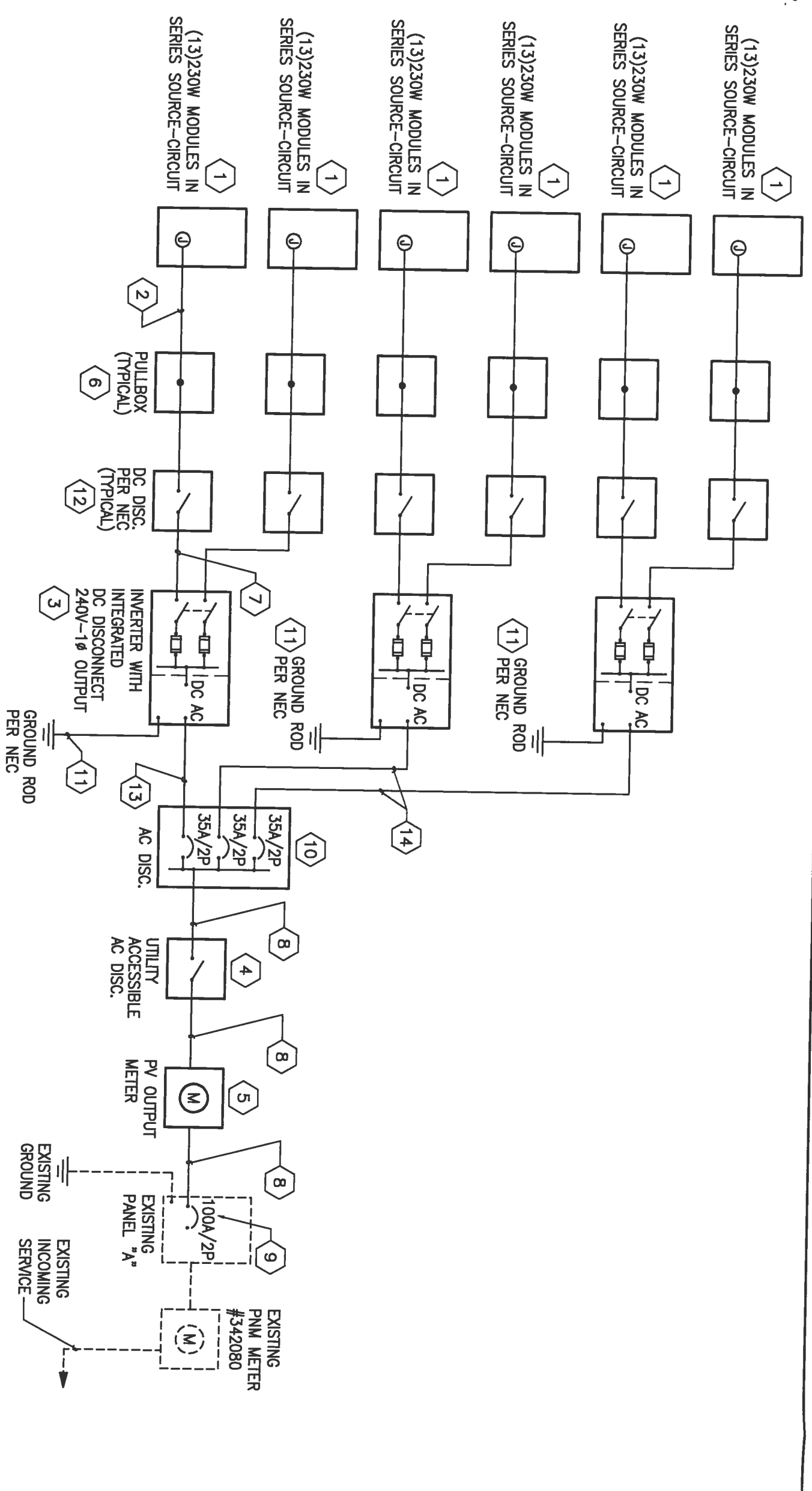
THE RESPONSE GROUP, INC.

An Electrical/Mechanical Engineering Corporation
 11930 Menaul N.E. Suite 214
 Albuquerque, New Mexico 87112
 Phone: (505) 323-7629 Fax: (505) 323-7594
 Email: responsegr@qwert.net

VILLAGE OF CORRALES
 LIBRARY PV SYSTEM
 84 W. LA ENTRADA #B
 CORRALES, NM 87048

SHEET TITLE
PV ONE-LINE DIAGRAM

SHEET NUMBER	1 OF 3	PROJECT	10206
SCALE:		DWN BY:	TFR
		CHK BY:	DDR
		DATE:	10-21-10

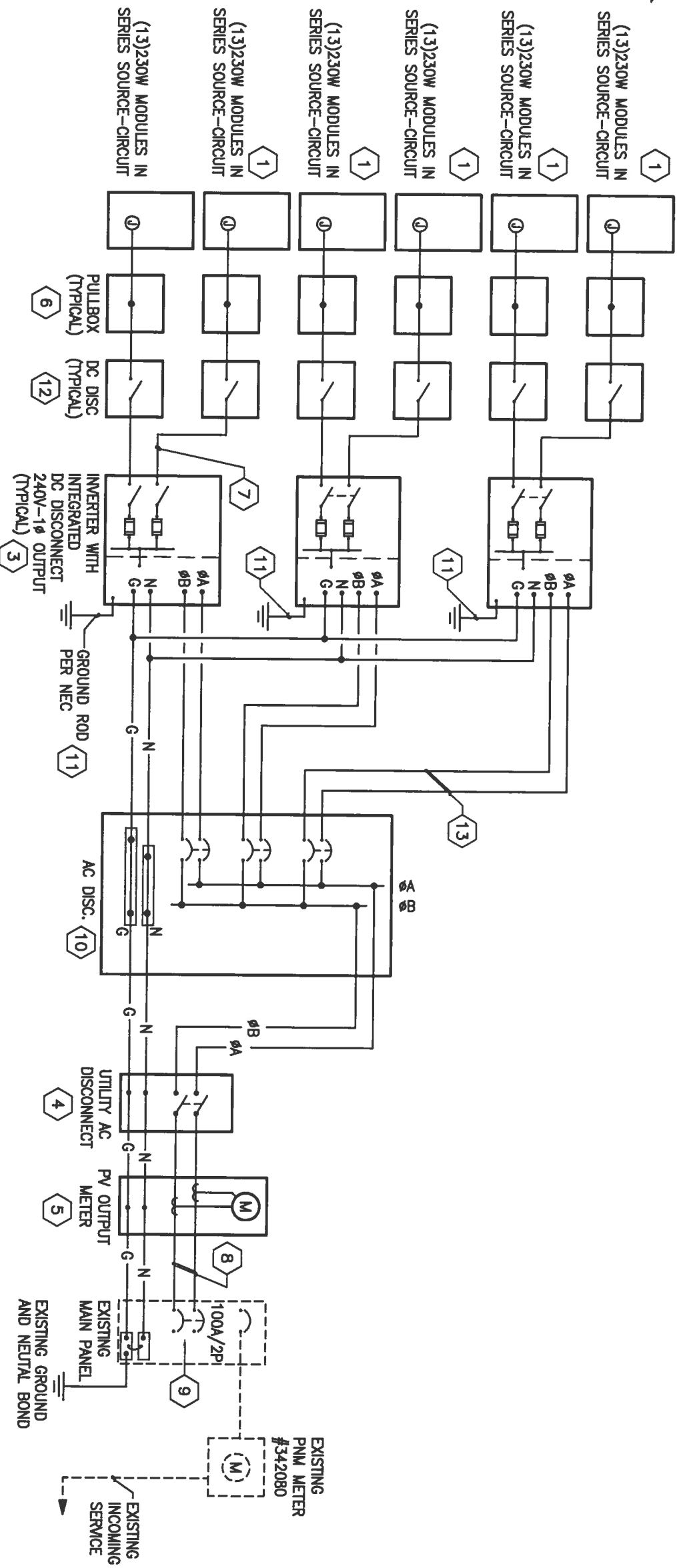


PV MODULE RATINGS (TYPICAL OF 78) 1

MODULE MANUFACTURER:	SOLON
MODULE MODEL #:	BLUE 230/01
MAX POWER CURRENT:	Lmp (A) 7.88
MAX POWER POINT VOLTAGE:	Vmp (V) 29.2
OPEN-CIRCUIT VOLTAGE:	Voc (V) 36.22
SHORT-CIRCUIT VOLTAGE:	Isc (A) 8.38
MAX SERIES FUSE:	OCPD (A) 15
MAXIMUM POWER:	Pmax (W) 230
MAX SYSTEM VOLTAGE:	typ 600Vdc (V) 600

INVERTER RATINGS (TYP OF 3) 3

INVERTER MAKE:	SMA-AMERICA
INVERTER MODEL #:	SB 6000-US
MAX DC VOLT RATING:	600V
MAX POWER @ 40°C:	7500W
NOMINAL AC VOLTAGE:	211-264V (240V)
MAX AC CURRENT:	25A
MAX OCPD RATING:	4 X 20A STRINGS



- KEYED NOTES**
- PHOTOVOLTAIC MODULE 230 WATT VOC, SOLON BLUE #230/01.
 - PV MODULE INTERCONNECT CABLE, 90°C WET-RATED CONDUCTORS, TYPE "TC" MULTI CONDUCTOR CABLE WITH THHN-2, XHHW-2, OR RHM-2 OR EQUIVALENT.
 - UTILITY INTER-TIE CO-GENERATION (NO BATTERY) INVERTER, RATED 600 VDC INPUT, 240VAC/60HZ OUTPUT, INTEGRATED DC SWITCH DISCONNECTOR WITH 15A FUSES, SMA-AMERICA #SUNNY BOY 8000-US. OUTPUT VOLTAGE SHALL BE 240 VOLTS.
 - UTILITY ACCESSIBLE NON-FUSIBLE DISCONNECT SWITCH, 30 AMP, 2-POLE, 240 VOLT, NEMA-SR ENCLOSURE. DISCONNECT SHALL BE LOCATED NEAR PV OUTPUT METER.
 - PROVIDE AND INSTALL A 100 AMP, 120/240VOLT, SINGLE PHASE METER ENCLOSURE FOR USE WITH PV OUTPUT METER, PNM DRAWING MS-2-20. COORDINATION REQUIREMENTS AND INSTALLATION WITH PNM.
 - PROVIDE AND INSTALL A PULLBOX, AS REQUIRED, FOR TRANSDUCING FROM PV MODULE INTERCONNECT CABLES TO CONDUIT AND CONDUCTORS. PULLBOX TO SHALL BE NEMA-SR AND SIZED PER N.E.C. (TYPICAL).
 - 2#10 IN 3/4" CONDUIT.
 - 3#3 AND 1#8 GROUND IN 1-1/4" CONDUIT.
 - PROVIDE AND INSTALL A NEW 100A/2P CIRCUIT BREAKER IN AVAILABLE SPACE.
 - AC DISCONNECT, (3)30A-2P CIRCUIT BREAKERS, 600 VAC, PROVIDE AND INSTALL UL LISTED, NEMA-SR CIRCUIT BREAKER ENCLOSURE.
 - 1#8 GROUND FOR DC CIRCUIT.
 - NON-FUSIBLE DISCONNECT SWITCH, 30 AMP, 1-POLE, 600 VOLT, NEMA-SR ENCLOSURE. DISCONNECT SHALL BE LOCATED IN SITE OF PV ARRAY.
 - 3#6 AND 1#10 GROUND IN 3/4" CONDUIT.

GENERAL NOTES

- PV SYSTEM SHALL MEET 2009 N.E.C. ARTICLE 690 REQUIREMENTS.

THE RESPONSE GROUP, INC.

An Electrical/Mechanical Engineering Corporation
 11930 Menaul N.E. Suite 214
 Albuquerque, New Mexico 87112
 Phone:(505) 323-7629 Fax:(505) 323-7594
 Email: response@response.net

VILLAGE OF CORRALES LIBRARY PV SYSTEM 84 W. LA ENTRADA #B CORRALES, NM 87048

PV THREE-LINE DIAGRAM


SHEET NUMBER	2 OF 3
PROJECT:	10206
SCALE:	
DWN BY:	TFR
CHK BY:	DDR
DATE:	10-21-10

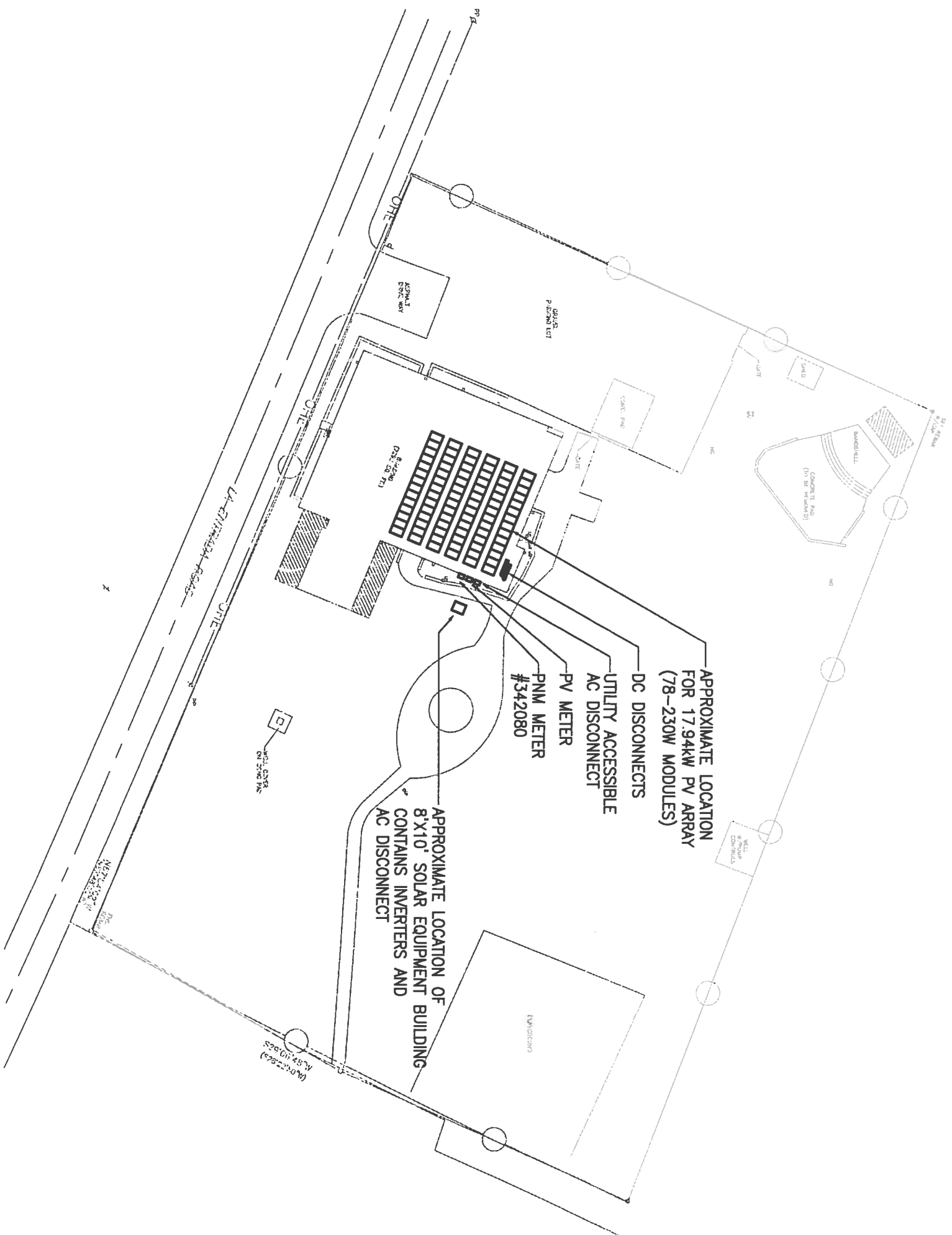
PV MODULE RATINGS @ STC (TYPICAL OF 78) (1)

MODULE MANUFACTURER:	SOLON
MODULE MODEL#:	BLUE 230/01
MAX POWER CURRENT:	Lmp (A) 7.88
MAX POWER POINT VOLTAGE:	Vmp (V) 29.2
OPEN-CIRCUIT VOLTAGE:	Voc (V) 36.22
SHORT-CIRCUIT VOLTAGE:	Isc (A) 8.38
MAX SERIES FUSE:	OCPD (A) 15
MAXIMUM POWER:	Pmax (W) 230
MAX SYSTEM VOLTAGE:	typ 600Vdc (V) 600

INVERTER RATINGS (TYP OF 3) (3)

INVERTER MAKE:	SMA-AMERICA
INVERTER MODEL#:	SB 6000-US
MAX DC VOLT RATING:	600V
MAX POWER @ 40°C:	7500W
NOMINAL AC VOLTAGE:	211-264V (240V)
MAX AC CURRENT:	25A
MAX OCPD RATING:	4 X 20A STRINGS


LARKIN GROUP_{INC. NC}
 8500 MENAUL NE, SUITE A-440
 ALBUQUERQUE, NEW MEXICO 87112
 (505) 275-7500, FAX (505) 275-0748
 ENGINEER'S FILE NO. 2005-0009



PHOTOVOLTAIC SITE PLAN
 SCALE: 1"=50'-0"



THE RESPONSE GROUP, INC.
 An Electrical/Mechanical Engineering Corporation
 11930 Menaul N.E. Suite 214
 Albuquerque, New Mexico 87112
 Phone: (505) 323-7029 Fax: (505) 323-7394
 Email: response@responseinc.net

VILLAGE OF CORRALES LIBRARY PV SYSTEM
 84 W. LA ENTRADA #B
 CORRALES, NM 87048

SHEET TITLE
PV SITE PLAN

SHEET NUMBER	3 OF 3	PROJECT:	10206
SCALE:		DRAWN BY:	TFR
		CHEK BY:	DDR
		DATE:	10-21-10